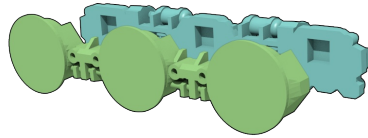


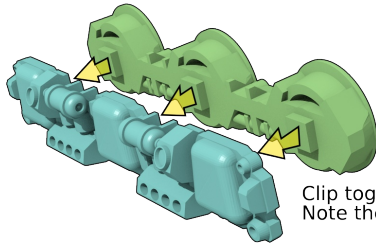
# 28mm Scale Mine Trolley Assembly Guide

Fits HO Gauge Rails

## Fixed Wheels

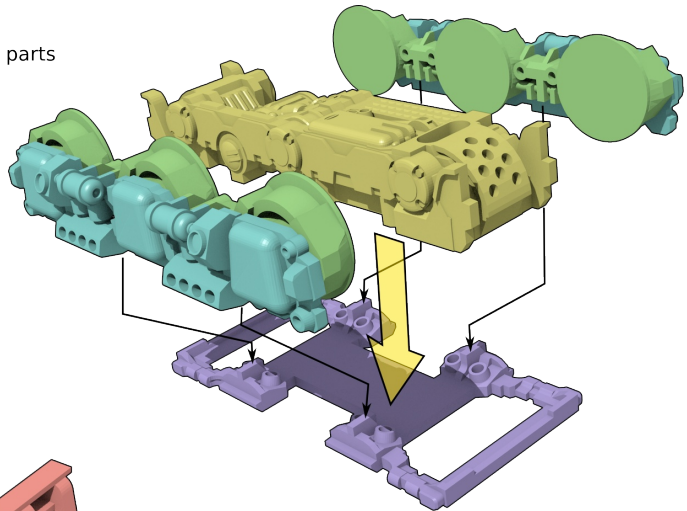


**Step 1 - Assemble Sides**  
*(After painting)*

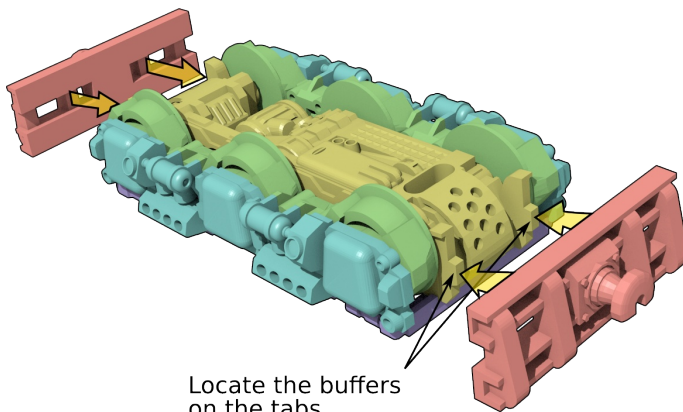


Clip together.  
Note the orientation of the parts

**Step 2 - Glue to Frame**

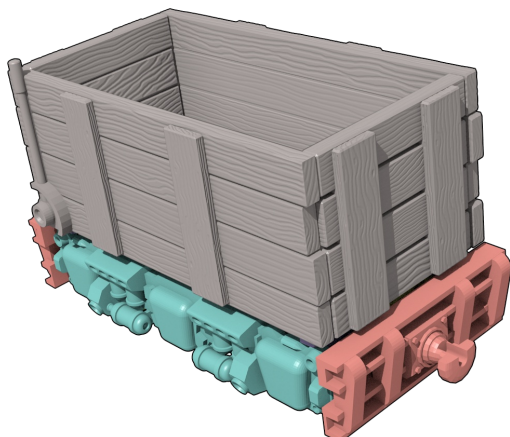
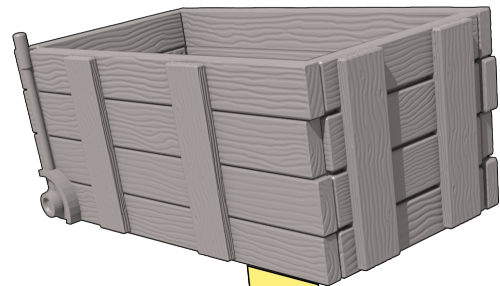


**Step 3 - Install Buffers**



Locate the buffers  
on the tabs.

**Step 4 - Add Crate**

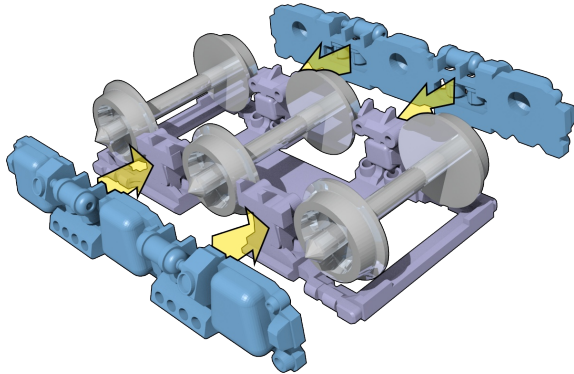


**Finished**

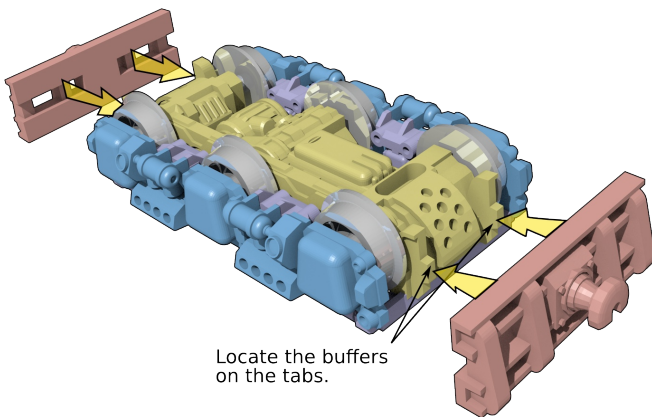
# 28mm Scale Mine Trolley Assembly Guide

Fits HO Gauge Rails and Commercially Available  
HO Gauge Wheels

## Free-Wheeled Variation

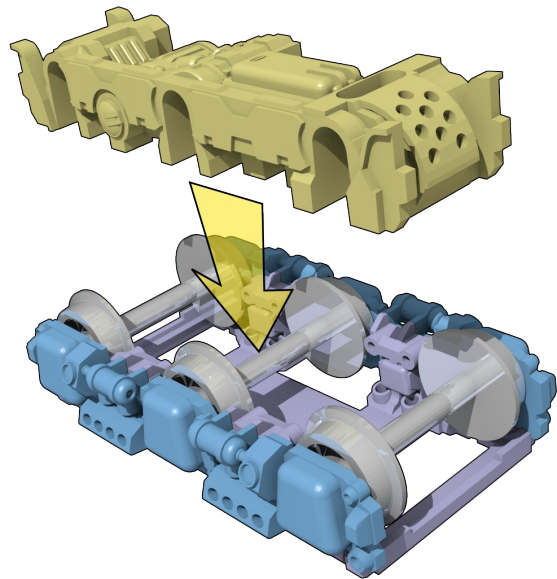


**Step 2 - Insert Motor Detail**

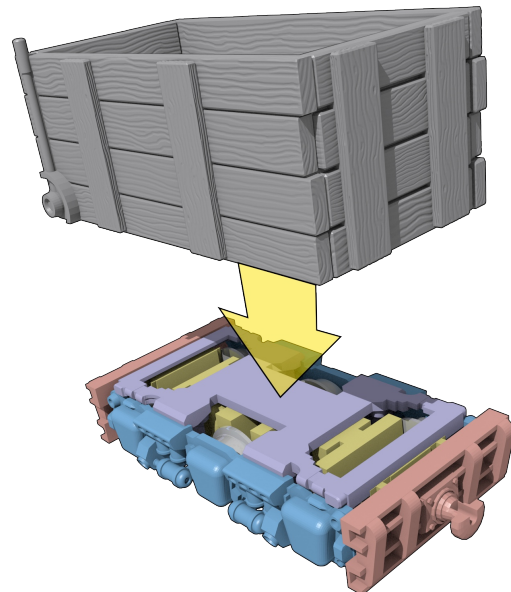


Locate the buffers  
on the tabs.

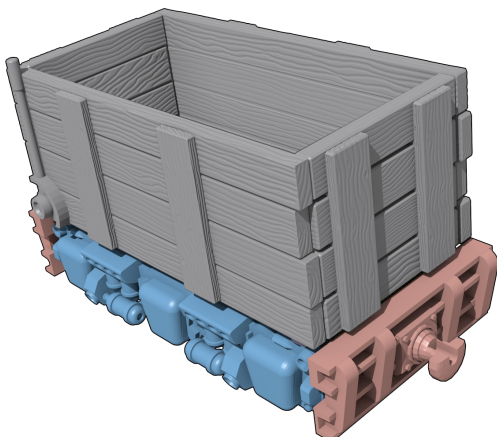
**Step 1 - Assemble Wheel Set**  
*(After painting)*



**Step 3 - Install Buffers**



**Step 4 - Add Crate**



**Finished**